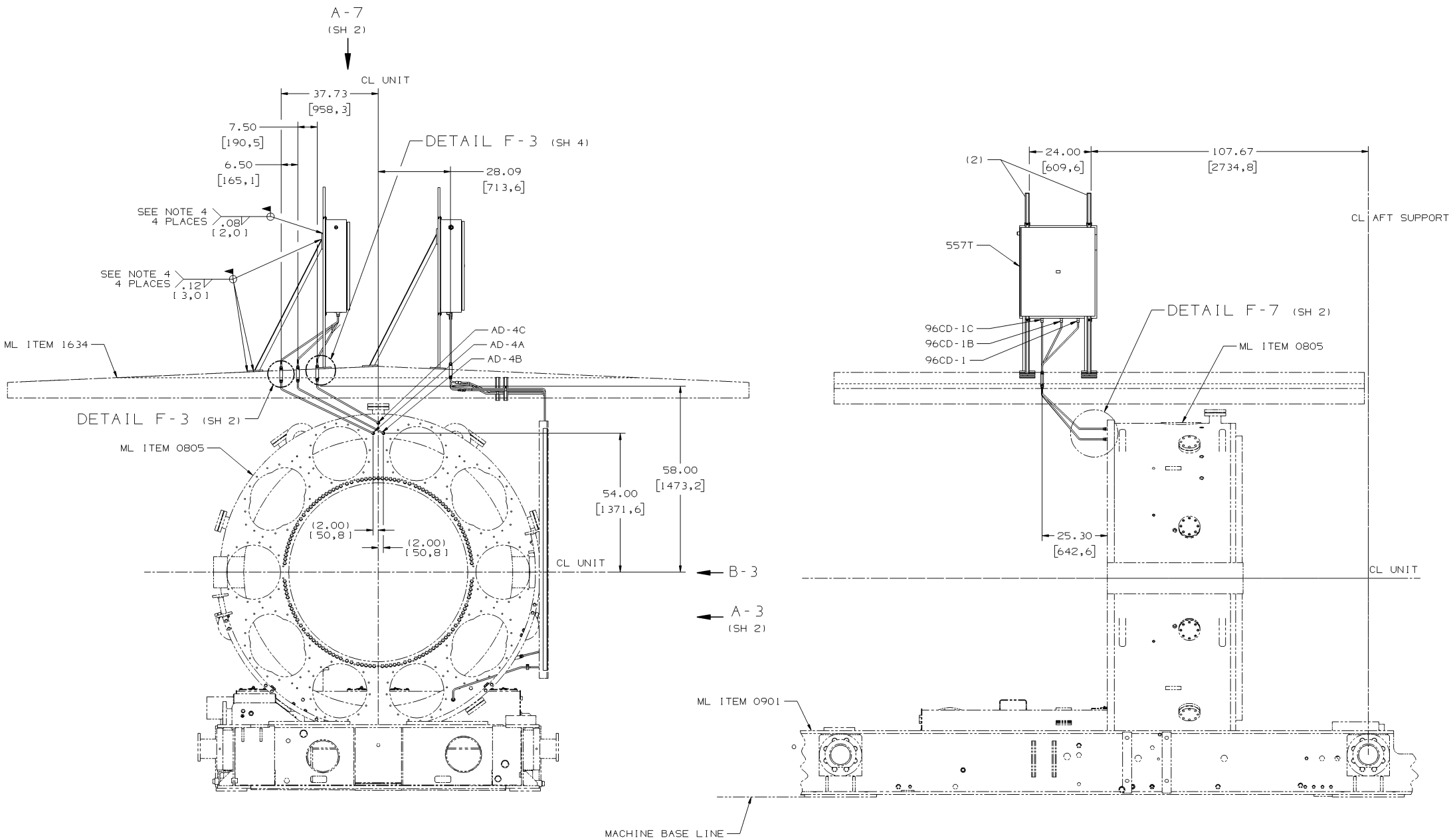


REV	DESCRIPTION	DATE	APPROVED
1	REVISE ON CAD ONLY UG PART: SD7078-557T-A0001 (SPEC: 119E9021)		

NOTES :

1. GENERAL MACHINING APPLIED PRACTICES ARE PER 348A9200.
2. PIPING APPLIED PRACTICES ARE PER 351A3700.
3. PIPING WELDS ARE PER P8A-A03, FILLER MATERIAL IS PER COLUMN AU-L UNLESS OTHERWISE SPECIFIED IN THIS DOCUMENT.
4. STRUCTURAL WELDS ARE PER P8A-A01, FILLER MATERIAL IS PER COLUMN AB UNLESS OTHERWISE SPECIFIED.
5. INSTALL AND SUPPORT TUBING PER 215A4435 AND 362A1025.
6. INSTALL TUBE UNIONS AS REQUIRED.
7. TUBE RUNS ARE ILLUSTRATIVE ONLY.
8. CLEAN AND PAINT PER ML ITEM 0108.
9. FLOW DIRECTION IS DESIGNATED WITH AN ARROW SYMBOL.
10. SLOPE .25 INCH PER FOOT MINIMUM.
11. LINEAR DIMENSIONS IN BRACKETS () ARE IN MILLIMETERS AND ARE FOR REFERENCE ONLY. ALL DIMENSIONS OF THE MANUFACTURED PART(S) MUST EQUAL THE DECIMAL-INCH DIMENSIONS AND, WHEN REQUIRED, BE RECORDED IN DECIMAL-INCH UNITS. MILLIMETER DIMENSIONS SHOWN MAY NOT CONVERT EXACTLY FROM INCHES DUE TO DIMENSIONAL ROUNDING.



- 67 MSDM (SST TRANSDUCER BOX ONLY) KG/cm² GAUGES
- 66 MSDM (CS TRANSDUCER BOX ONLY) KG/cm² GAUGES
- 65 MSDM (SST TRANSDUCER BOX ONLY) BAR GAUGES
- 64 MSDM (CS TRANSDUCER BOX ONLY) BAR GAUGES
- 63 MSDM (SST TRANSDUCER BOX ONLY) KPA GAUGES
- 62 SUMMARY FOR OFF BASE LAGGING
- 61 MSDM (CS TRANSDUCER BOX ONLY) KPA GAUGES

6	INSTR, CLN & PNT	ML ITEM 0108
5	INSTR, ASSY-TUBE & FTG	215A4435
4	WELDING-GENL SPEC	P8A-A01
3	WLD FAB OF GTRB PP	P8A-A03
2	APLD PRAC, PP	351A3700
1	APLD PRAC, GENL MACH	348A9200
IT.	NOMENCLATURE	IDENT

REV	REV STATUS OF SHEETS
4 3 2 1	SH

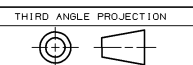
BOM ISSUED

SIGNATURES	DATE	GE Power Generation
DRAWN PUGAZH	03-07-18	GENERAL ELECTRIC COMPANY
CHECKED BALAS	03-07-21	Greenfield, SC
ENGINEER A.B. COSTA	03-07-25	
ISSUED A.B. COSTA	03-07-25	
QUALITY FRANK J. NORTH II	03-07-25	
APPLIED PRACTICES 348A9200		
SIM 101	117E4462	SCALE NONE

© COPYRIGHT 2003 GENERAL ELECTRIC COMPANY
 PROPRIETARY INFORMATION-THIS DOCUMENT CONTAINS PROPRIETARY INFORMATION OF GENERAL ELECTRIC COMPANY AND MAY NOT BE USED OR DISCLOSED TO OTHERS, EXCEPT WITH THE WRITTEN PERMISSION OF GENERAL ELECTRIC COMPANY.

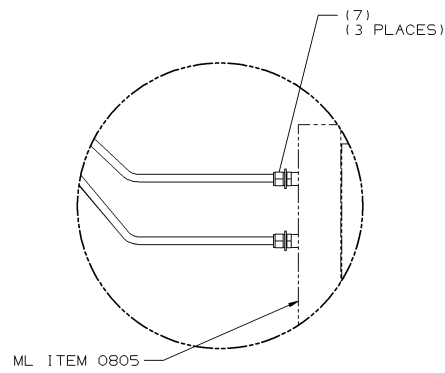
PRESSURE TRANSDUCER ARR
 TURBINE (DUEL FUEL)

FIRST MADE FOR ML-7A1PEA1-16 557T
 Dwg No 119E9021
 SHEET 1

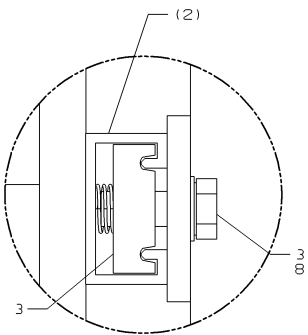


DT-IN

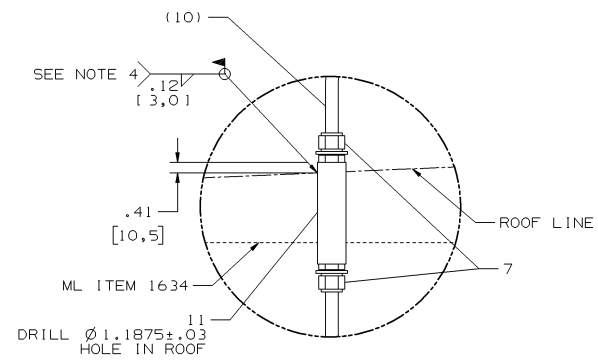
REV	DESCRIPTION	DATE	APPROVED
1	REVISE ON CAD ONLY UG PART: SD7078-557T-A0001 (SPEC: 119E9021)		



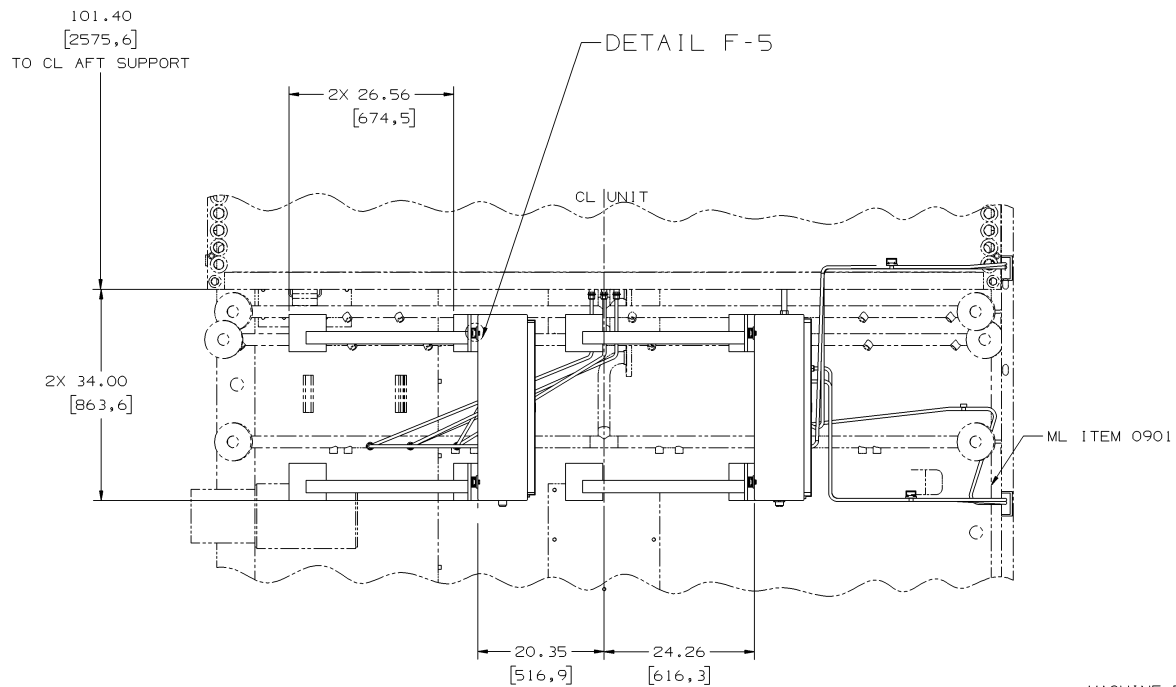
DETAIL F-7 (E-3 SH 1)
3 PLACES



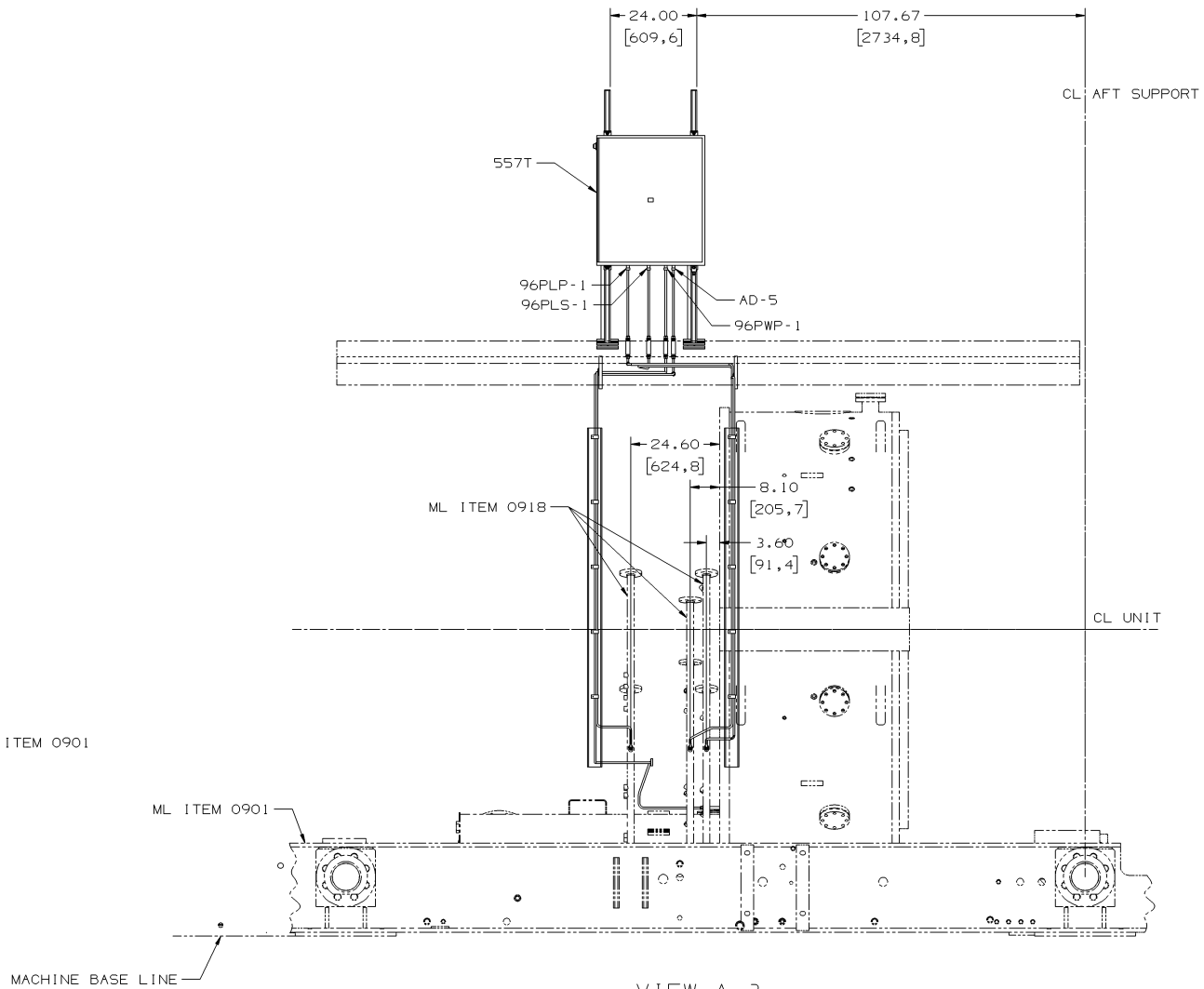
DETAIL F-5 (D-6 SH 1)
(8 PLACES)



DETAIL F-3 (D-8 SH 1)
(7 PLACES)



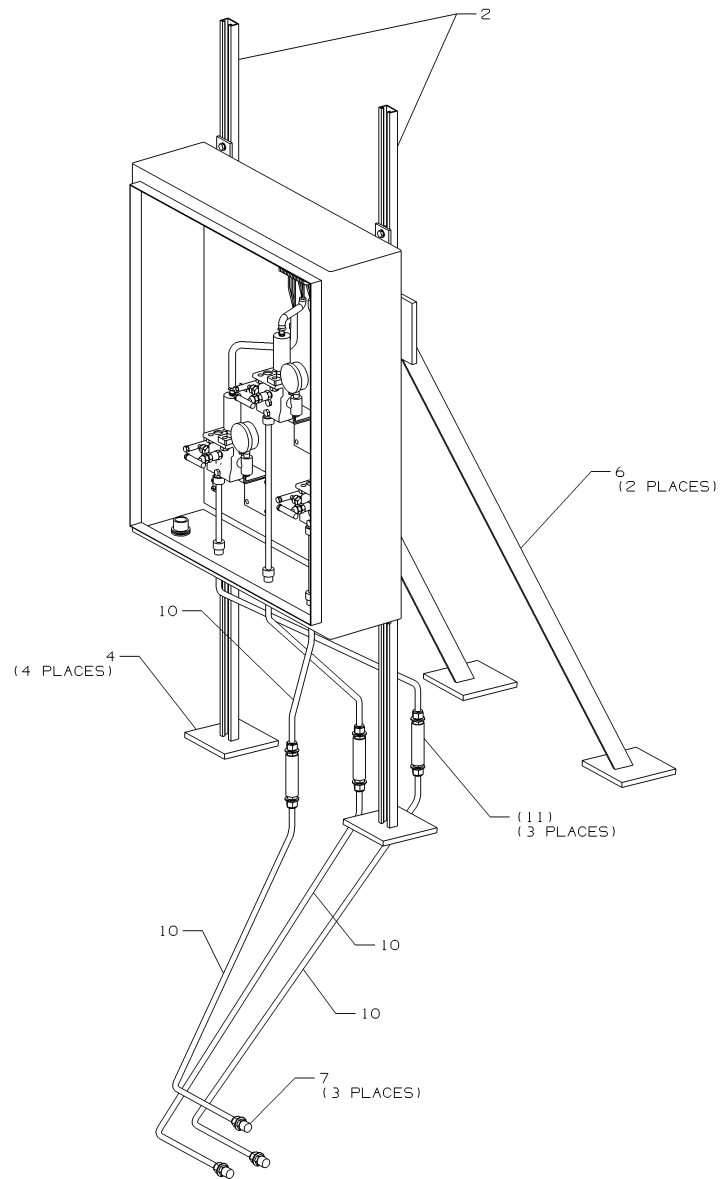
VIEW A-7 (F-7 SH 1)



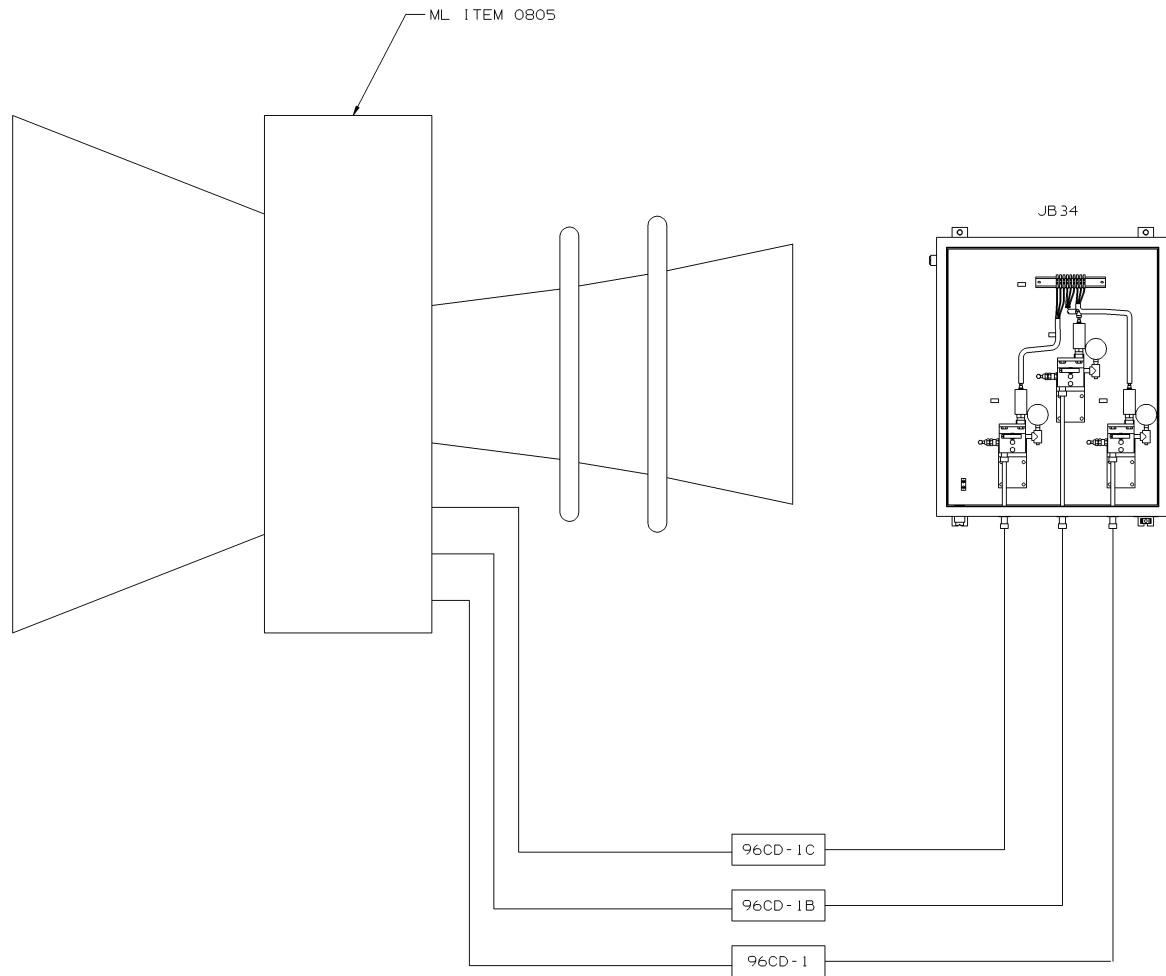
VIEW A-3 (C-4 SH 1)
(FOR JB34A ONLY)

REVISIONS			
REV	DESCRIPTION	DATE	APPROVED

REVISE ON CAD ONLY
UG PART: SD7078-557T-A0001
(SPEC: 119E9021)

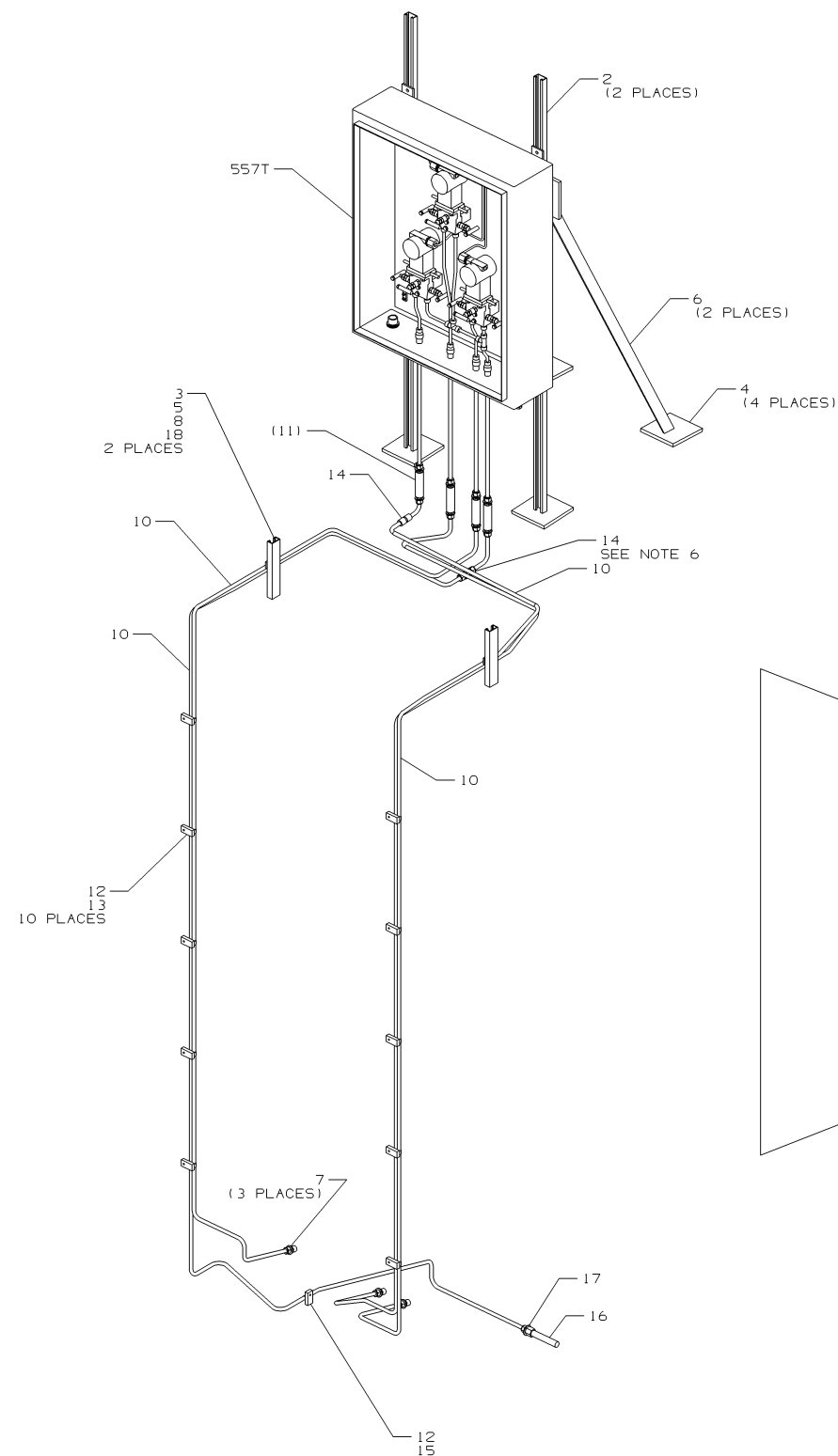


ISOMETRIC VIEW
(FOR JB34 ONLY)

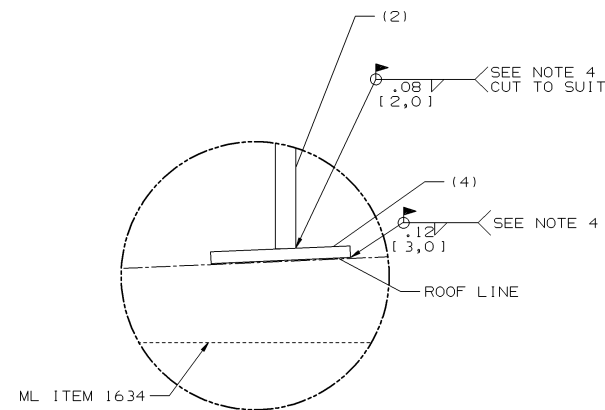


SCHEMATIC DIAGRAM
(FOR JB34 ONLY)
(G1, G3 THRU G7)

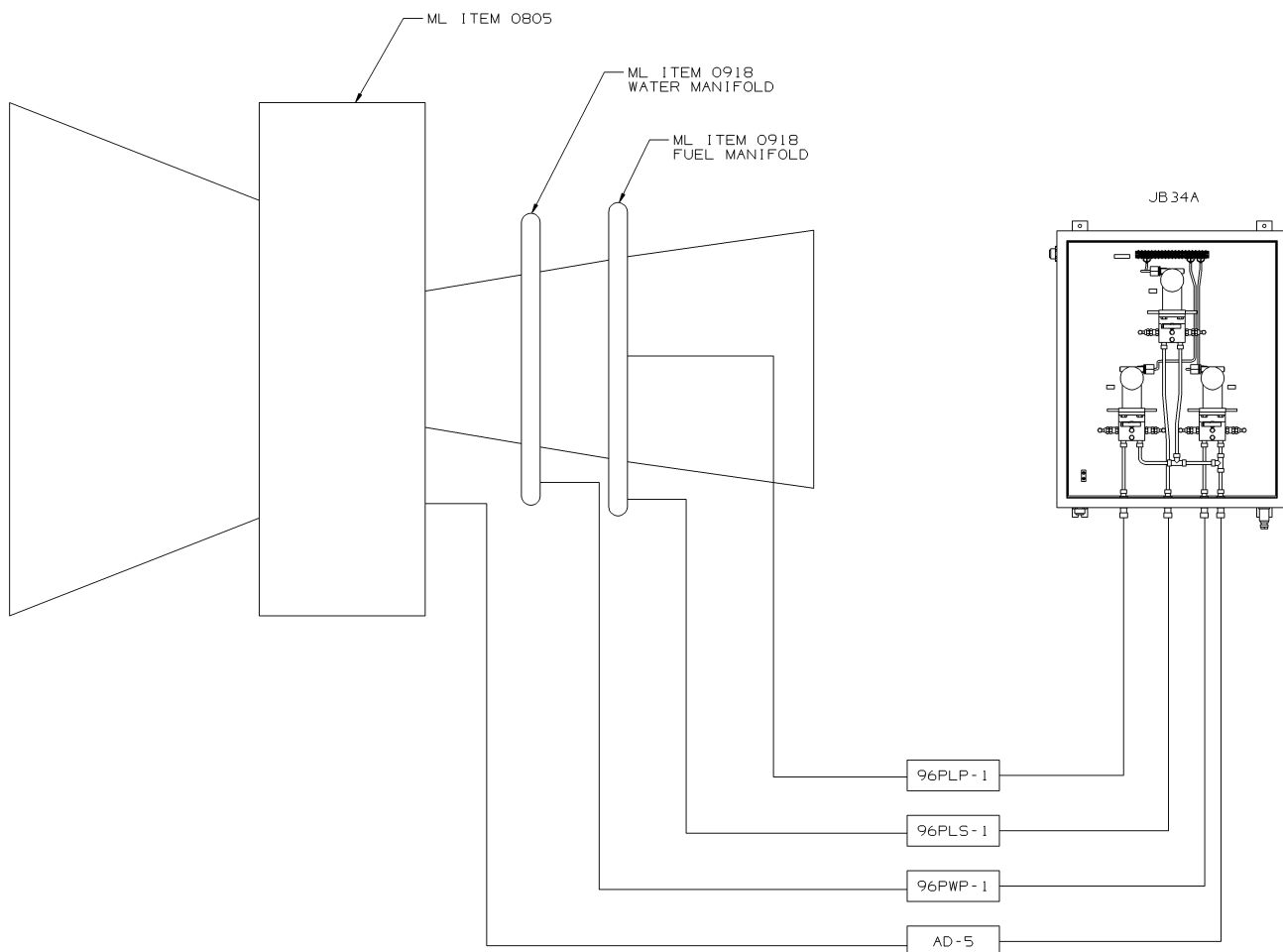
REV	DESCRIPTION	DATE	APPROVED
1	REVISE ON CAD ONLY UG PART: SD7078-557T-A0001 (SPEC: 119E9021)		



ISOMETRIC VIEW
(FOR JB34A ONLY)



DETAIL F-3 (F-6 SH 1)
(8 PLACES)



SCHEMATIC DIAGRAM
(FOR JB34A ONLY)

© COPYRIGHT 2003 GENERAL ELECTRIC COMPANY

PROPRIETARY INFORMATION-THIS DOCUMENT CONTAINS
PROPRIETARY INFORMATION OF GENERAL ELECTRIC
COMPANY AND MAY NOT BE USED OR DISCLOSED TO
OTHERS, EXCEPT WITH THE WRITTEN PERMISSION OF
GENERAL ELECTRIC COMPANY.

GENERAL ELECTRIC COMPANY
GE Power Generation
ISSUED A.B. COSTA 03-07-25 SCALE NONE

SIZE E CASE CODE DWG NO 119E9021 SHEET 4

119E9021 4